

# SUPPORTING RESIDENCES FOR STUDENTS OF HOSEI UNIVERSITY

# 2025



PARTNERSHIP WITH  
KYORITSU MAINTENANCE CO., LTD.



# About our student dormitories

## 1. Daily Meals

Each dormitory has a kitchen, and homemade breakfast and supper are provided everyday (Except Sundays, National Holidays, the 5th Saturdays, Summer Holiday and Winter Holiday) to support health of busy students. You can save time for cooking and washing dishes. You will eat better and use your time more effectively! You can choose Japanese or Western menu for breakfast.

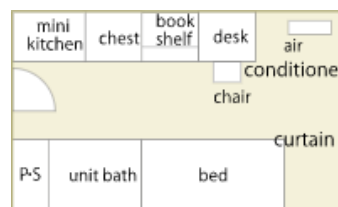
\*Last order time for breakfast is 15minutes before the closing time, and that for dinner is 30minutes before the closing time.

\*Attention: It's not possible to respond to your personal requests according to your allergy or religious restriction. Vegetarian / religious menu such as halal are not available.



## 2. Facilities & Equipment

Students do not need to buy or bring their own furniture because necessary fixtures and furniture for daily life are provided, which saves you the cost of moving. Each room is furnished with a bed, desk, chair, air-conditioner, bookshelf, closet or chest, and lamp. Each room has 24 hour dedicated Internet connection.



## 3. Common Facilities

Our dorm has many common facilities. You can use not only the dining room, kitchen, public bath, laundry room and private shower room but also the electric appliances such as a vacuum cleaner and an iron.

\*Actual equipment may differ from the images.



## 4. Safety Management

Dormitory managers help residents with their daily life, and cares about their health condition and security. When you're sick, or when you need to be receive parcels in your absence, they will support you.



We hope our dormitory would be a place that gives many opportunities to interact with other languages and cultures in your daily life.

# Recommended Dormitories: Ichigaya Campus

## Hosei University Komagome Dormitory (For Women & Men)

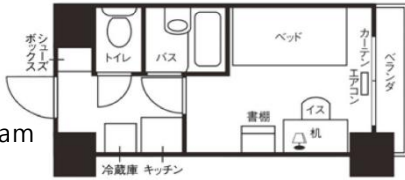


**Access:** Approximately 5 minutes walk from "Komagome" Station of JR Yamanote Line  
**Address:** 3-16-19, Komagome, Toshima-ku, Tokyo  
**Room size:** 16.80m<sup>2</sup> / Capacity : 102 people



### Dorm Hours

Curfew: No Curfew  
 Breakfast: 7am~8:30am  
 Dinner: 6pm~10pm

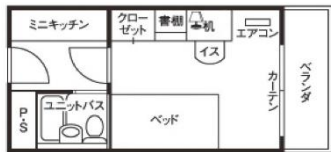


\*This website is in Japanese, but you can see what the dormitory looks like from the pictures.

Application fee (one time)	Security deposit	¥50,000
	Entrance fee	¥150,000
	Annual Maintenance Fee	¥246,000
	Building maintenance fee	¥3,000
Total of application fee		¥449,000
Monthly fee	Rent	¥99,200~
	Internet facility(Wi-Fi)	¥3,960
	Water Bill	¥1,650
	Electricity fee	¥7,150
Total of monthly fee		¥111,960~
Leaving dormitories	Room cleaning fee	¥47,300

\*The prices shown here are as of December 2024. Prices are subject to change.

## Hosei University Funabori Dormitory (For Women & Men)



**Access:** Approximately 5 minutes walk from "Funabori" Station of Tokyo subway Shinjuku Line  
**Address:** 1-4-7, Funabori, Edogawa-ku, Tokyo  
**Room size:** 16.20m<sup>2</sup> / Capacity : 89 people



### Dorm Hours

Curfew: No Curfew  
 Breakfast: 7am~8:30am  
 Dinner: 6pm~10pm



\*This website is in Japanese, but you can see what the dormitory looks like from the pictures.

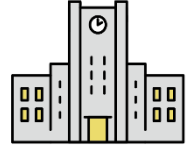
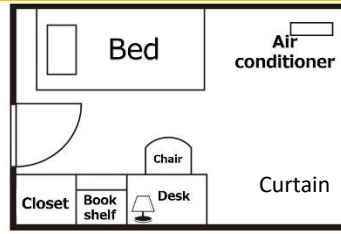
Application fee (one time)	Security deposit	¥50,000
	Entrance fee	¥150,000
	Annual Maintenance Fee	¥246,000
	Building maintenance fee	¥3,000
Total of application fee		¥449,000
Monthly fee	Rent	¥89,000~
	Internet facility(Wi-Fi)	¥3,960
	Electricity fee	¥7,150
	Water Bill	¥1,650
Total of monthly fee		¥101,760~
Leaving dormitories	Room cleaning fee	¥47,300

\*The prices shown here are as of December 2024. Prices are subject to change.

**We have other dormitory options to offer!**

## Recommended Dormitories: Koganei campus

### Hosei University Higashi-Koganei Dormitory (For Men)



**Access:** Approximately 15 min. walk from "Higashi-Koganei Station" of JR Chuo Line  
**Address:** 2-15-2, Kajinocho, Koganeishi, Tokyo  
**Room size:** 13.77m<sup>2</sup> / Capacity 57 people

#### Dorm Hours

**Curfew:** No Curfew  
**Breakfast:** 7am ~ 8:30am  
**Dinner:** 6pm ~ 10pm



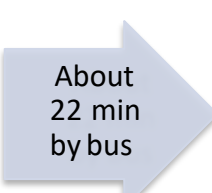
\*This website is in Japanese, but you can see what the dormitory looks like from the pictures.

Application fee (one time)	Security deposit	¥50,000
	Entrance fee	¥100,000
	Building maintenance fee	¥3,000
Total of application fee		¥153,000
Monthly fee	Rent	¥76,200
	Internet facility(Wi-Fi)	¥3,960
	Electricity fee	¥7,150
	Monthly management fee	¥6,000
Total of monthly fee		¥93,310
Leaving dormitories	Room cleaning fee	¥39,600

\*The prices shown here are as of December 2024. Prices are subject to change.

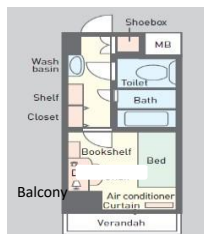
## Recommended Dormitories: Tama Campus

### Hosei University Nishi-Hachioji Dormitory (For Women & Men)



**Access:** Approximately 12 min. walk from "Nishi-hachioji Station" of JR Chuo Line  
**Address:** Moto Hongo-cho, Hachioji-shi, Tokyo  
**Room size:** 18.00m<sup>2</sup> / Capacity 72 people  
**Dorm Hours**

**Curfew:** No Curfew  
**Breakfast:** 7:00AM ~ 8:30AM  
**Dinner:** 6:00PM ~ 10:00PM



\*This website is in Japanese, but you can see what the dormitory looks like from the pictures.

APPLICATION FEE (One Time)	Security Deposit	¥50,000
	Entrance Fee	¥180,000 (1year) ¥230,000 (2 years) ¥300,000 (3years) ¥330,000 (4years)
	Annual Maintenance Fee	¥228,000
	Building Maintenance Fee	¥3,000/year
	Room Cleaning Fee	¥47,300
TOTAL OF APPLICATION FEE		¥484,300 ~ ¥634,300
MONTHLY FEE	Rent	¥89,000 with meals ¥71,400 without meals
	Internet Facility	¥3,960
	Electricity Fee	Direct contract with A power company
	Water bill	¥1,650
TOTAL OF MONTHLY FEE		¥77,010 or ¥94,410 ~

\*The prices shown here are as of December 2024. Prices are subject to change.

## ■ Lease Futon(Japanese Bedding set)

・TV ・Fridge



<LCD TV>  
 3 months : ¥11,000  
 6 months : ¥15,950  
 12months : ¥25,300

< Fridge >  
 3 months : ¥11,000  
 6 months : ¥14,300  
 12 months : ¥20,900

### <Futon(Bedding set) >



Period	Price
4 months	¥16,060
6 months	¥20,020
8 months	¥23,980
10 months	¥27,940
12 months	¥31,900

\* Bed sheets exchange are provided three times a month.

## ■ HOW TO APPLY

### SEND US AN E-MAIL

- Please e-mail to [int@gakuseikaikan.com](mailto:int@gakuseikaikan.com) giving the following info:  
 ①Your name ②Nationality ③TEL ④E-mail address ⑤Department of Hosei University ⑥Month for moving-in ⑦Estimated contract period

### SEND US AN APPLICATION

- Kyoritsu Maintenance Co., Ltd. will send you an official application form to your e-mail address. Please read our cancellation policy, and if you agree with it please send it back by e-mail after filling out.

### INVOICE WILL BE SENT

- After your qualifications are approved, we will assign your dormitory and send you the result and an invoice. You will be asked to wire the initial cost to our bank account.

### INITIAL PAYMENT

- After you pay the initial cost, your contract will be validated officially and cancellation charge is applicable.

### MOVE INTO THE DORM

- You move into your dormitory. Check-in time is from 10:00AM to 8:00PM everyday except Sundays, Japanese national holidays, and dormitory holidays.

### SIGN UP THE CONTRACT

- Please participate in a dormitory orientation to sign up the contract.

## 【Application & Inquiries】

Kyoritsu Maintenance Co., Ltd.

Customer Center, International Dept.

TEL +81-3-5295-7889 Fax: +81-3-5295-5906

E-mail: [int@gakuseikaikan.com](mailto:int@gakuseikaikan.com)

If you are not an international student, please visit our website in Japanese. ⇒[hosei-dormitory.com](http://hosei-dormitory.com)



English website



Japanese website